



# Championship application

Bid document v.2021

## FIPS-Mouche International Sport Fly Fishing Federation

Reference : FIPS-Mouche Competition Rules 2021 – Art 3

In accordance to Art 3.1 of Ref championship applications should be sent to the general secretary at least 4 months prior to the date of the general assembly.

*( a rule change will be proposed at the next GA in 2019 ; championship applications will need to be sent at least 2 years ahead of championship date . This to allow alternate solutions should inspection in x-2 show that the chosen venue is not up to the required standard. )*

The goal of this document is to provide guidance to members wishing to organise a FIPS-Mouche championship. The document describes the minimum criteria and elements that need to be included to have valid championship application document.

Year / month of the championship: 2027/05

Duration: 18<sup>th</sup> to 23<sup>rd</sup> May (6 days)

Type: Euro/Zone

Venue: Portugal / Viana do Castelo / Arcos de Valdevez

Competition waters :

Sectors	Name	Type of fishing	Wading ( Y/N )	Fish species
Lake 1	Touvedo Dam – Lago Ermelo	Bank	N	Brown Trout ( <i>Salmo trutta</i> ), Salmon, Barbel ( <i>Barbus barbus</i> ), Carp ( <i>Cyprinus carpio</i> ), Nase ( <i>Chondrostoma nasus</i> ), Northern Iberian chub ( <i>Squalius carolitertii</i> ), European eel ( <i>Anguilla anguilla</i> ), European perch ( <i>Perca fluviatilis</i> ).
River 1	Veze	Bank	Y	Brown Trout ( <i>Salmo trutta</i> ), Salmon, Nase ( <i>Chondrostoma nasus</i> ), Northern Iberian chub ( <i>Squalius carolitertii</i> ), Barbel ( <i>Barbus barbus</i> ), European eel ( <i>Anguilla anguilla</i> ).
River 2	Veze	Bank	Y	Brown Trout ( <i>Salmo trutta</i> ), Salmon, Nase ( <i>Chondrostoma nasus</i> ), Northern Iberian chub ( <i>Squalius carolitertii</i> ), Barbel ( <i>Barbus barbus</i> ), European eel ( <i>Anguilla anguilla</i> ).
River 3	Coura	Bank	Y	Brown Trout ( <i>Salmo trutta</i> ), Rainbow Trout ( <i>Oncorhynchus mykiss</i> ), Nase ( <i>Chondrostoma nasus</i> ), Northern Iberian chub ( <i>Squalius carolitertii</i> ), European eel ( <i>Anguilla anguilla</i> ).
River 4	Mouro	Bank	Y	Brown Trout ( <i>Salmo trutta</i> ), Salmon, Nase ( <i>Chondrostoma nasus</i> ), Northern Iberian chub ( <i>Squalius carolitertii</i> ), European eel ( <i>Anguilla anguilla</i> ).

Practice waters:

Sectors	Name	Type of fishing	Wading (Y/N)	Fish species
Lake 1	Touvedo Dam – Lago Ermelo	Bank	N	Same as main competition
River 1	Vez	Bank	Y	Same as main competition
River 2	Vez	Bank	Y	Same as main competition
River 3	Coura	Bank	Y	Same as main competition
River 4	Mouro	Bank	Y	Same as main competition

Championship headquarters (HQ) and accommodations: (try to have as few as possible different hotels, if more than one is used they should be close to each other)

Name	N° *** rating	Possibilities	Price range
1: (HQ)* Luna Hoteis	4 Stars	Double and Single Rooms	125€ to 135€ Bed&Breakfast (Halfboard is an extra 28€ per person)
2: Ribeira Collection Hotel	4 Stars	Double and Single Rooms	115€ to 165€ per night

\*should have adequate meeting rooms (captains meetings , symposium, ...)

Map of proposed fishing venues and accommodations at annex A showing distances and travel time between sectors and hotel(s).

SPOC (single point of contact) for the championship

Name	Tf	E-mail
FPPD Secretariat	+351 936 525 852	secretaria@fppd.pt

Organising committee for the championship: (state names and functions of people involved)

Name	Function	Tf	e-mail
José Aleixo	Coordinator of Mouro River	+351968748806	aleixocaldas@gmail.com
António Rodrigues	Coordinator of Mouro River	+351966394715	tozepesca@gmail.com
Jorge Barbosa	Coordinator of Vez River	+351936390728	jpgonzalez.barbosa@gmail.com
Jorge Araújo	Coordinator of Vez River	+351966032699	enfrugby@hotmail.com
Tiago Castro	Coordinator of Coura River	+351933396810	bruno16081981@gmail.com
Bruno Peres	Coordinator of Coura River	+351937446722	brunoperes1998@outlook.pt

Motivation for organizing the championship at the chosen venue:

With this Championship, the aim is to promote this modality in the Alto Minho Region, more specifically, in the Municipalities of Arcos de Valdevez and Paredes de Coura, thus attracting interested parties from the Region to start this modality; and, combining the enormous potential of the rivers present in these municipalities (more specifically the Rio Vez and the Rio Coura), with the gastronomy and landscapes that they offer, in order to offer the participants and companions of this tournament, not only a good sporting moment, but also a few days of excellent gastronomic and tourist benefits.

Budget and cost for participants (this may differ if different standards of accommodation are offered):

Hotel 1 :

- 125€ p/p Bed&Breakfast (single room)
- 153€ p/p Halfboard (single room)
- 67,50€ p/p Bed&Breakfast (double room)
- 95,50€ p/p Halfboard (double room)

Hotel 2 : .....€ p/p

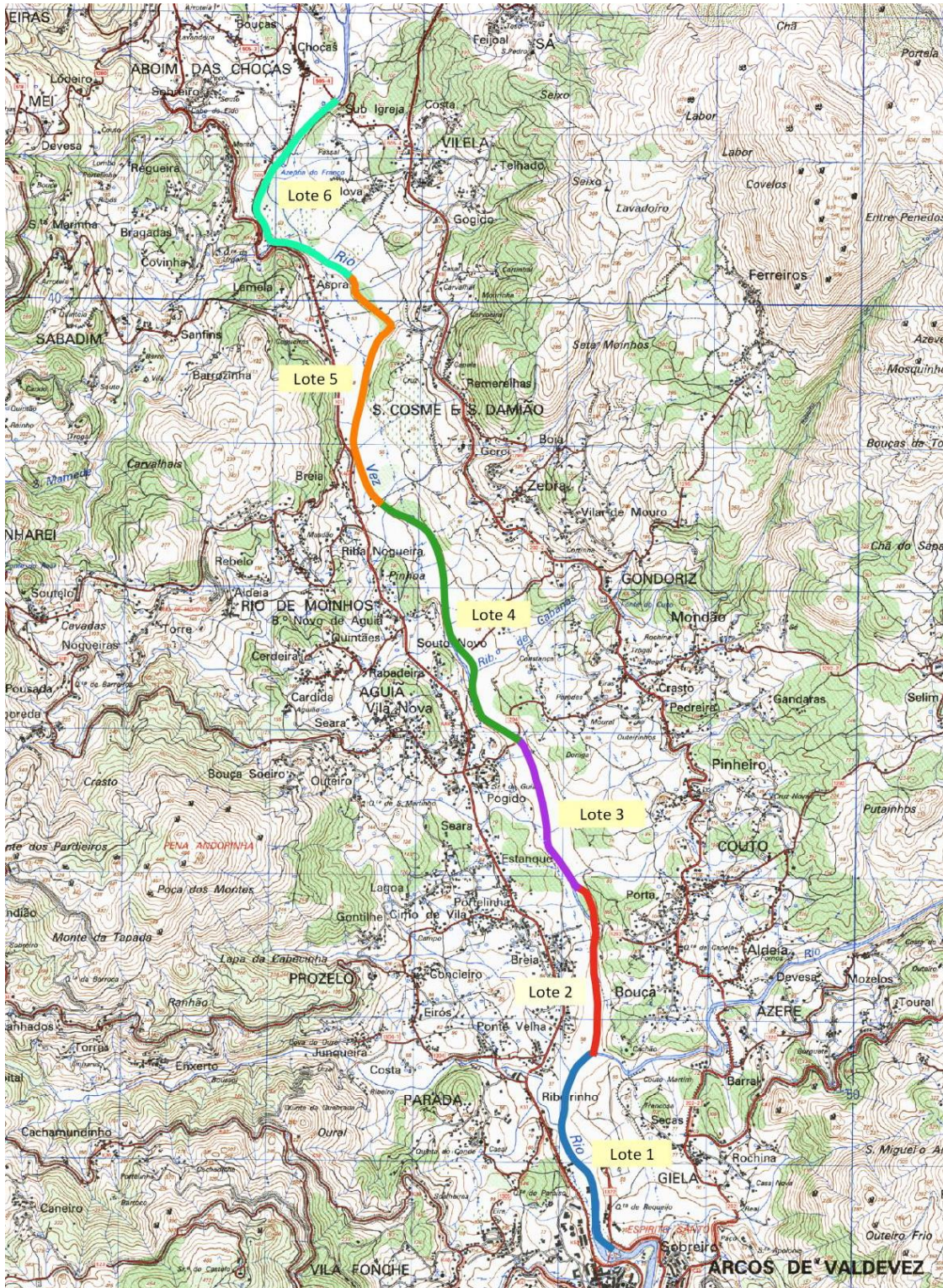
Hotel 3 : .....€ p/p

A breakdown of the budget is provided at annex B. The XL template , provided by FIPS-Mouche, should be used .

The price per participant may vary in function of the number of teams participating. An estimated should be provided for 10, 15, 20, 25, 30 teams.

**Map of fishing sectors at hotel locations**

Indication of travel time between venues



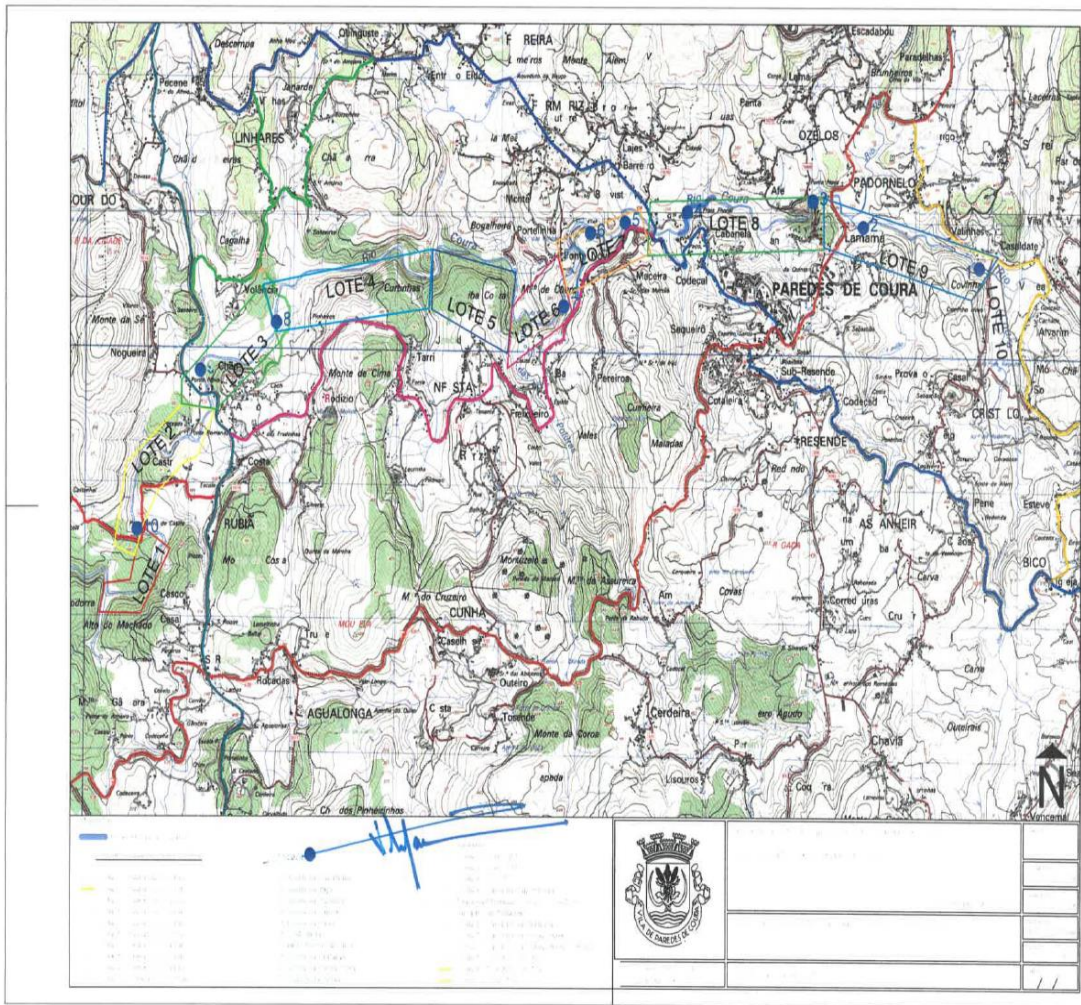
River Vez 1 – Arcos de Valdevez Municipality Concession – Length 9,5 km – Distance from event venue to start of Competition is 1 Km, distance to last section is 9,5 km



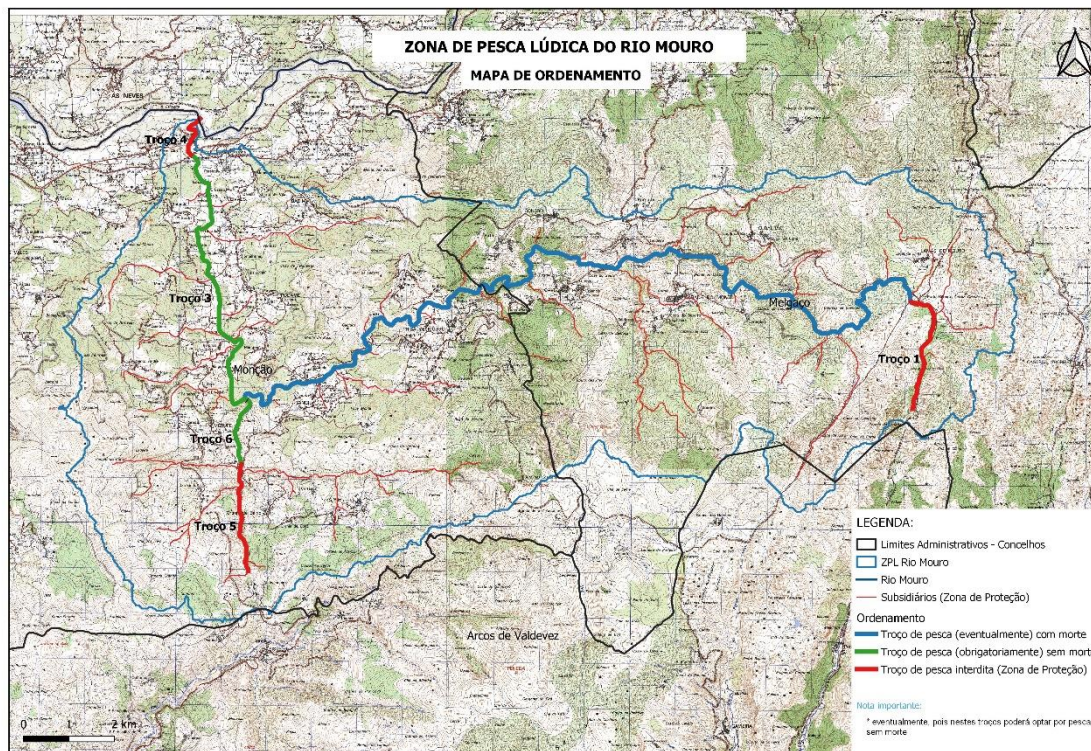
River Vez 2 - ICNF Concession - Length of sections for the competition 10.66 km - Distance from the event venue to the start of the competition 12.44 km - distance to the last section 22.10 km



Lake 1 - Arcos de Valdevez Municipality Concession – Touvedo Dam – Length 5 km – Distance from the event venue to the start of the competition 20 km



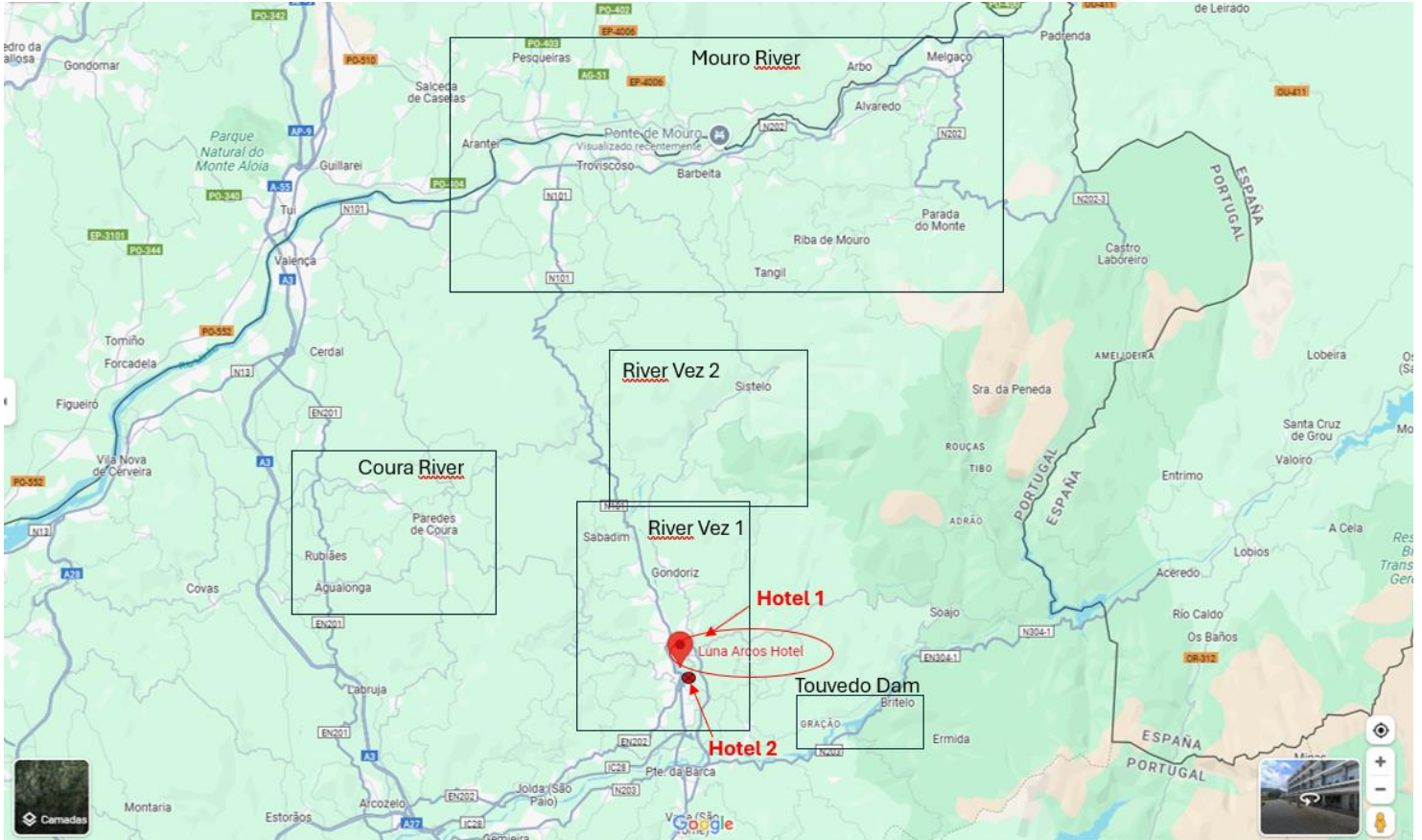
**Coura River - Scenario 3 - Paredes de Coura Municipality Concession – Length 15.67 km-  
Distance from the event headquarters to the competition venue 25.71 km**



Mouro River – Scenario 4 – ICNF Concession – Length 35 km – Distance from the event headquarters to the competition venue 35.7 km



### Overview Map:



### Close Up Map w/ Hotels:



Annex B

**Budget for the championship**

See XLS file (FIPS-Mouche template must be used)