



FIPS-Mouche

Captains' meeting

40th FIPS-Mouche World Fly Fishing Championship

12.August 2021 Kuusamo Hotel Scandic

Championship organisation team



WELCOME !

Head of team

- International organizer : Ilkka Prininen (see the contact on website)
- Secretary main: Peter Nissen (see the contact on website)

Sector Judges

Sec 1 Maria Tuominen, Kai Kallio

Sec 2 Kanerva Kilpelä

Sec 3 Petri Virolainen, Jouni Stenberg, Jouni Ronkainen

Sec 4 Jani Kontio

Sec 5 Juha Viista, Leevi Voutilainen

FIPS-Mouche Team



FIPS-Mouche Board Representatives

Mario Podmanik – President

Stefan Allacker – General Secretary / Senior International Supervisor

International Supervisors

Stefan Allacker / Senior International Supervisor

Marie Lagerkvist (Sweden)

Sivan Jansson (Sweden)

Team of International Supervisors (IS)



Head of team

Stefan Allacker (BEL)

Team members

- *Marie Lagerkvist (SWE)*
- *Sivan Jansson (SWE)*

	Session 1&2	Session 3&4	Session 5
Marie	Sec I	Sec III	Sec V
Stefan	Sec III	Sec V	Sec I
Sivan	Sec V	Sec I	Sec III

IS – team duties



During Comp

- Double check if all competitors are on the bus. (especially the first session)
- Carry sealed envelopes to competition venue (rivers only)
- Open envelopes upon arrival at first drop- off point / according to agreement with IO
- Help Sector Judge if required
- Follow home nation angler to beat
- Check beat setup (top and bottom of beat, special features. ...etc)
- Check on anglers in neighbouring beats during preparation time , if possible.
- Check host country angler during competition
- Make ruling in case of clear infraction of CR 2019. (i.e foul hooked fish, out of sector hooked fish, ...etc
- If any query by ctl or competitor , make note on competitor's score sheet => JURY decision
- Look over shoulder of Ctl

Team captains do's & don'ts



Know the rules + FIPS-Mouche and championship COVID protocol

A brief summary rules:

- Must wear his/her accreditation badge visibly at all time : if not NO rights whatsoever !
- Make himself known to beat controller upon arrival at beat
- Only person allowed to communicate with his competitor during session competition time (not during boat sessions !)
- NOT allowed in the water
- Responsible for substitutions ; use correct form ; respect timings
 - Team members may fish sector only once !
- May NOT transport their competitors to and from venues
- NO material help during competition (duration of the session fishing times)

JURY Election



JURY Members based on CR

- Ilkka Pirinen – International Organizer
- Mario Podmanik – FIPS-Mouche President
- Stefan Allacker – FIPS-Mouche General Secretary / Senior International Supervisor

+ 3 selected representatives from present teams

- Jiri Pejchar (CZE)
- Sandro Soldarini (ITA)
- Rolf Myllari (SWE)

DRAW

News re draw based on FIPS-Mouche Covid Safety Protocol

- Only one captains meeting
- Captains acceptance of the Covid Safety Protocol by sign
- Competitor names and position checked beforehand
- 1 Representative per team present (no concentration of people)
- Face covering and keeping a distance while CM
- No draw made by captains
- No Information Board – draw and all updates only on website in inside of Competition->Results



FIPS-Mouche COVID Safety Policy



Basic facts

Created and published 22.March 2021

Served as a basis for CIPS COVID Protocol (valid also for coarse fishing and sea fishing)

Main concern is safety of participants!!!

Compromises of both sides (FIPS-Mouche and Competitors)

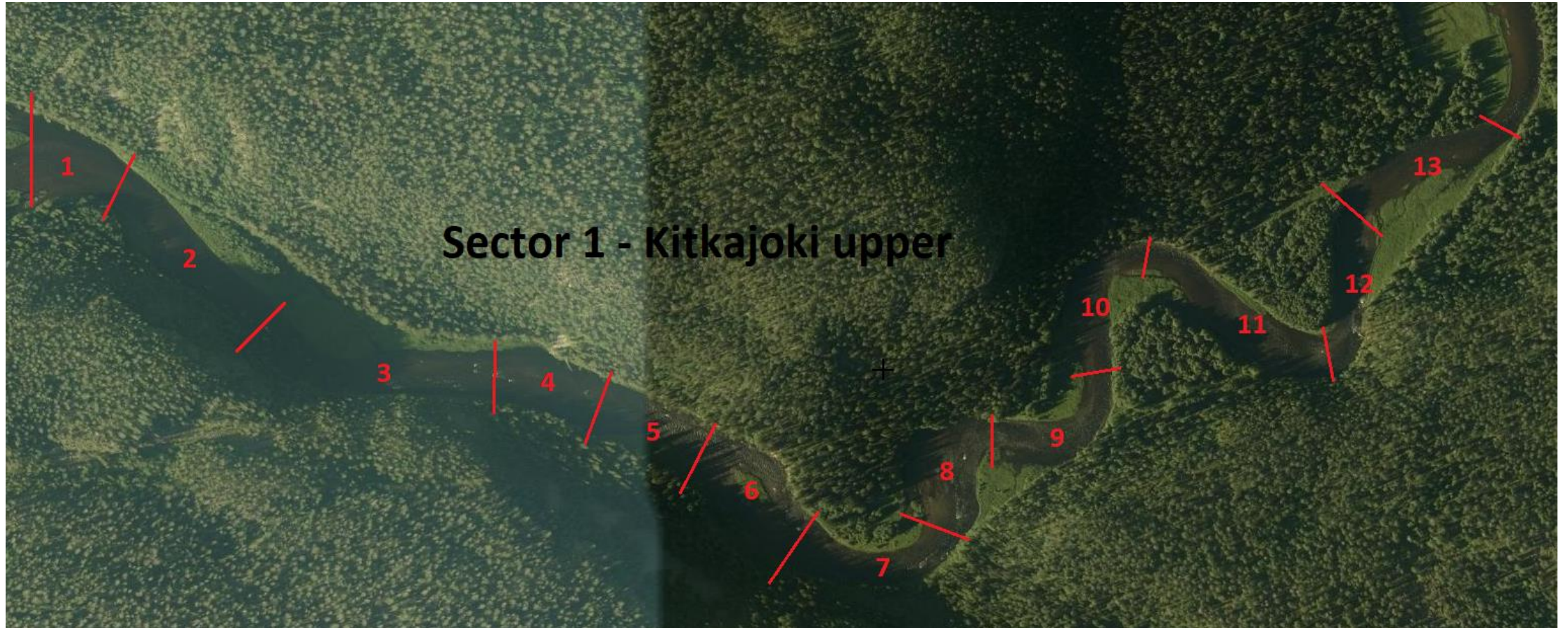
News introduced

- Shortened program to 4 days only (no official practise)
- Shortened and minimised ceremonies
- Packed lunches only (captain/manager to collect)
- No socializing among the teams in the hotel (team considered as a bubble)
- More space in the large busses (no common transport with controllers)
- No signature of catch - gesture of approval instead (digital picture at the end or carbon)
- Controllers face covering during measuring/close contact with competitor
- Wearing a mask during a session upon discreation of competitor
- Minimum length net 100 cm
- No exchange of seats allowed while boat fishing (initial position in boat determines toss of coin)
- Change of drogue position possible based on comp in command
- No information board

General information

- Program as it is in the WEB-pages
 - Opening ceremony outside, 50 meters left from hotel
 - Sit on the chairs, after ceremony Dinner at the Hotel Rukahovi
- Risks:
 - Do not leave your rods to reindeer can walk over them!
 - Follow marked lines, do not try shortcuts
- Sector Judges have first aid kits
- Emergency number 112

Sector 1 – Kitkajoki upper



Beats 2 & 3 requires waders

Sector 2 and 4, Lakes

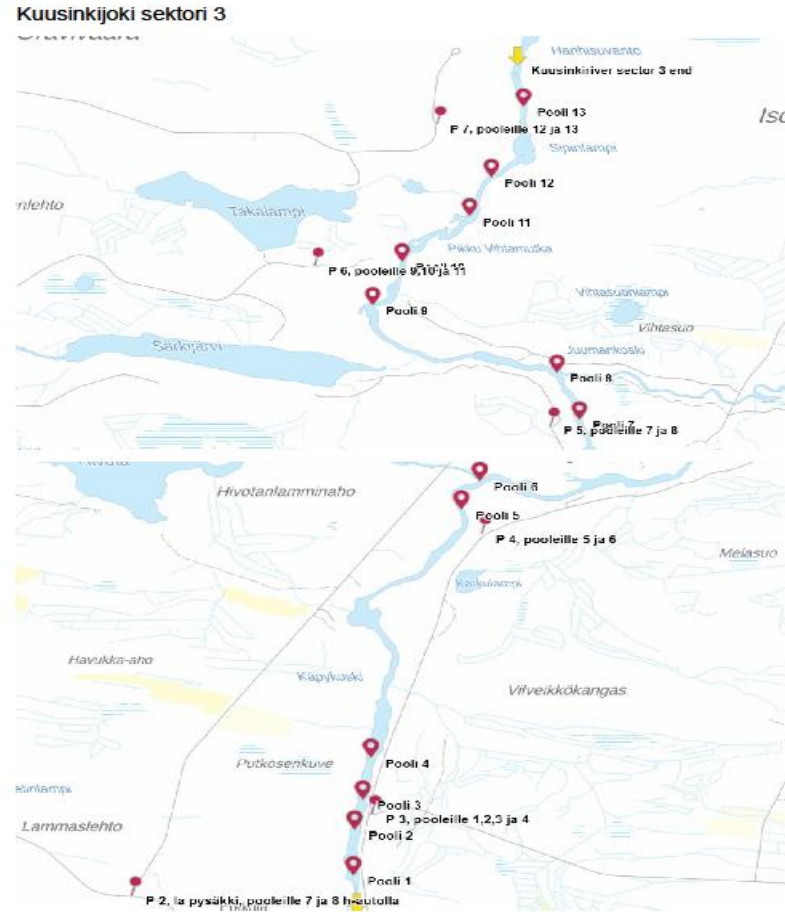
Koverrusjärvi sektori 2



Kylmäluomanjärvi sektori 4, kilpailualueen raja punaisella viivalla



Sector 3



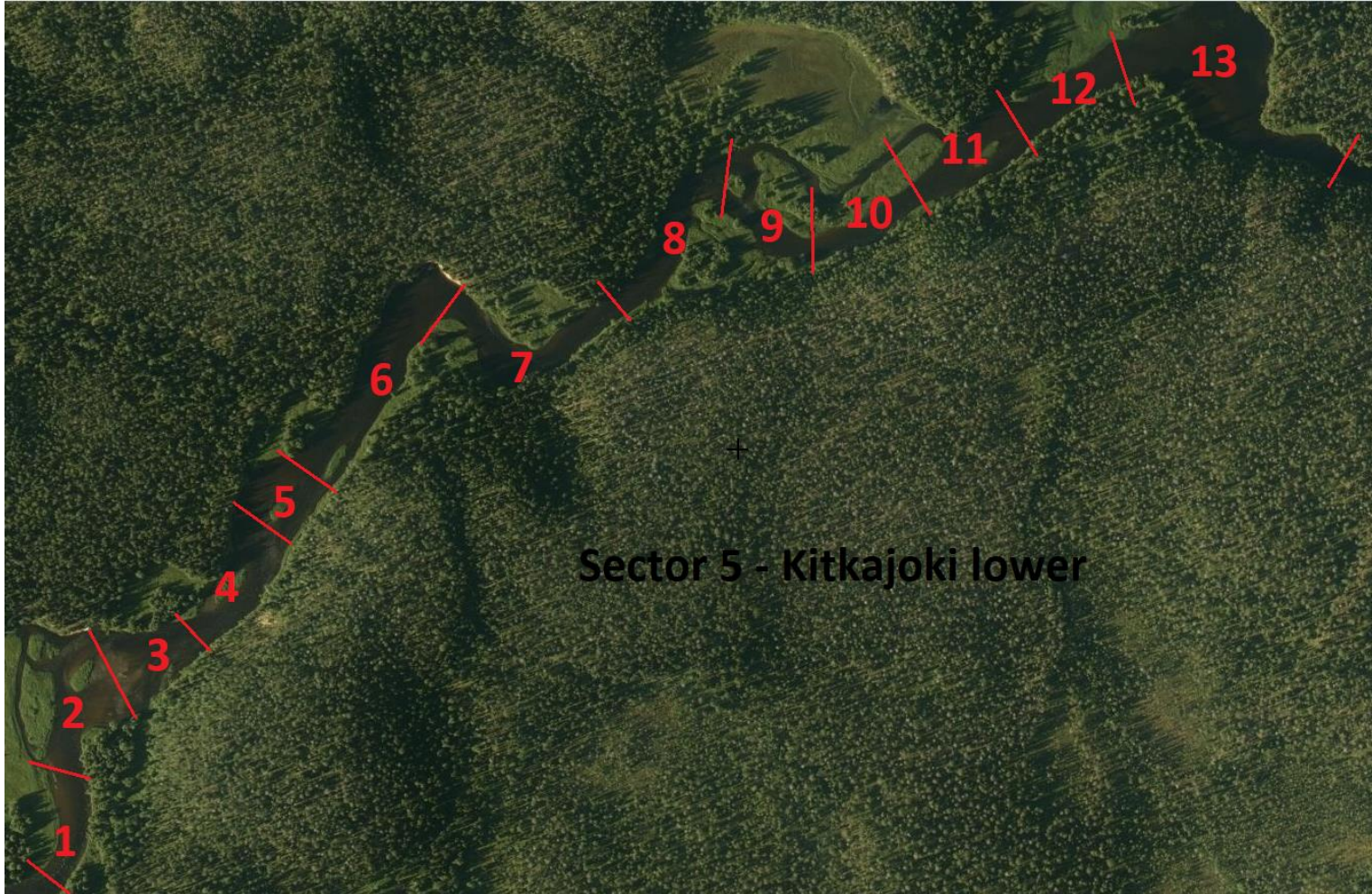
Sector 3 details



Sector 3 details



Sector 5 – Kitkajoki lower



The beat lines between 2-3 and 8-9 are not a straight lines. Check the beatmarkers on the island and on the other side.

Beats 1,2, 9-13 requires waders. 7-8 rubber boots or waders recommended.
Beats 9-12 controller must enter the small island.

Beat 13 competitor may choose which bank to fish from. If competitor chooses to start from the opposite bank competitor and controller must wade across before the session starts. Controller may not switch bank during session.

Transport

- Buses numbered A,B,C,D,E as groups! Same bus through the competition!
- Departure from the front of the hotel (ready to load 30 mins beforehand)
 - busses to sector V and I will leave at 6:30 AM
 - busses for sector III and IV at 7:00 AM
 - Buss for sector II will leave at 7:15 AM
- Only competitors + manager/captain allowed in bus!
- Colored lanyards as stated in CR 2019 (light green stands for yellow!!!)
- Lunches in the bus in the bags. 1,5 liter water per day.
- Manager/captain/Reserve willing to use the bus must announce it to bus manager and he will arrange these additional packed lunches for them
- In case of rotation V -> I a camping place on a beat Nr.2 of sector V will serve as concentration place where the envelopes will be opened for successive session

Rules and rules modifications



Know the rules !

- Go through the Rules modifications (RM) of the championship
- Brown trouts eligible only on the lakes!!!
- Length of net 100cm as minimum (telescopic allowed, extended at submitting of fish to controller)